

靈氣

SUMMER 2024 | ISSUE NO. 2

JUST FOR TODAY

Our Quarterly News from Reiki Tradition Healing & Training Centre

REIKI NEWS... more than just a Newsletter

靈氣 伝統

Welcome

we're so happy you're here!

Thank you to all our subscribers, old and new!

Here, you'll get quarterly updates, course info,
announcements and all things Reiki

We're thrilled to have you!

IN THIS ISSUE



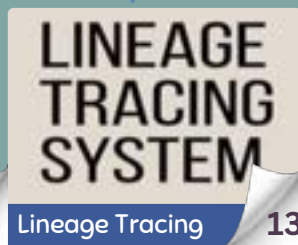
What's New

5



Social Prescribing

10



Lineage Tracing

13



Course Info

16



Dr Lang

32

Plus all things Reiki

ACCREDITED, CERTIFIED & VERIFIED BY



Welcome to *JUST FOR TODAY*

Issue No. 2

靈氣

Contents

FOREWARD.....	3
WHAT'S NEW.....	5
ANNOUNCEMENTS.....	6
SOCIAL PRESCRIBING.....	10
LINEAGE TRACING.....	13
COURSE INFO.....	16
FHT LOCAL UPCOMING EVENTS.....	26
DR LANG.....	32
MEMBERSHIPS.....	37
GIVING BACK.....	41
POSSIBILITIES.....	43
COMPETITION TIME.....	46

Who we are and what we do.....

We are a **Healing and Training Centre and School of Reiki** based in the picturesque village of Springhead, Oldham in Lancashire....

where you become a Happier Healthier You

You can see why students' attend
our courses from all over the UK

Rest assured, when selecting **Reiki Tradition School of Reiki** as your Reiki Training Provider, you will be receiving the very best training within the Reiki Industry.



Martin Robert Thirlwell
10th Generation Reiki Master

Martin holds **AET Level 3 Award in Teaching and Education**; the highest standard.

Our teaching is **fully inclusive**, meaning we can also teach **disabled children** and **adults with special needs**.

Martin also holds an **Accredited Distinction in Regression and Psychanalysis**.



CONTACT US

176 Oldham Road
Springhead
Saddleworth
Oldham
OL4 5SJ

Email: info@reikitradiation.me.uk

Office: 0161 627 5413

Mobile: 07966 149 365

Web: www.reikitradiation.me.uk



I'LL TAKE
YOU DIRECT TO
THE WEBSITE

FOLLOW US

You can find out more about Reiki Tradition and see what we've been up to via our social media pages:



www.facebook.com/reikitradiation



www.instagram.com/reikitradiation/



www.youtube.com/reikitradiationschoolofreiki

Foreward.....

MARTIN R THIRLWELL
MFHT, MCHP, CNHC REGISTERED
OWNER REIKI TRADITION



靈氣 伝統

Hi Everyone,

Welcome to our 2nd newsletter Summer Issue No2.

We had some terrific feedback after publishing our Spring Issue No1; thank you to everyone who submitted the feedback form to us.

Where is time going, no sooner is it Monday then it's Friday and before we know it another month has passed.

I hope you enjoy reading our newsletter. In this issue we have introduced some terrific reading, Dr Lang a Surgeon working from Spirit, Reiki Tradition School of Reiki Lineage Tracing System, Benefits of becoming a member of any organisation, Social Prescribing GP Referral Systems plus much more.

We are pleased to bring forward 6 new Masters' who completed the Reiki 3rd Degree Master/Teacher course finishing Saturday 29th June into the Lineage of the Usui Shiki Ryoho System, Alisa Brook, Julie Chisholm, Zane Sabine Vitenberga-Beinare, Brenda Haigh, Shital Patel and Stephanie Wilson.



Congratulations to you all now 11th Generation Reiki Masters of the Usui Shiki Ryoho System of Reiki

We are also pleased our first Development Day 'Reiki and working with the Chakra Energy System' took place Sunday June 16th (10am till 5pm). This was a superb turnout thank you for everyone who attended.

We are working on creating a Monthly 'Reiki Share' at the Therapy Rooms. When we have run this event in the past it's usually been a full-house. This is a great opportunity to witness 'Movers', 'Physic Surgery' and 'Chakra Balancing Practitioners' performing. Come along and join in, meet likeminded people and a chance to network.

I'll keep everyone posted on our Instagram and Facebook pages. If you would like to be directly updated please do not hesitate to contact me where I'll be pleased to offer my assistance.

This Newsletter, is your Newsletter if you would like to see anything specific then please just let me know.

Well, Thank You
everyone have a
great read *Martin x*



Current read:

Healing in a Hospital by Sandy Edwards

Read
More

see page 23

Welcome.....

ALISA BROOK
EDITOR



Hello, and the warmest of warm Summer welcomes
Even though we've only had a few days of the old summer sun upto now, we know your heart is shining.

How quick did those last few months go by (!).... and here we are already with Issue No.2. We hope you enjoyed the first edition of 'Just for Today' and got something useful from the content.

We had quite a list to begin with of what we should christen the publication; one stood out in the end... 'JUST FOR TODAY', you will recall this from The Gokai Principles; on page 12 there's a fun reminder of these.

We have some supa-dupa features for you in this edition; including Memberships, Battersea, Giving-Back and Dr Lang to name just a few.

On a personal note, I and several other students completed our Master's with Martin at the end of June. All I can say is if you're contemplating the next step, *do not hesitate*. The class content, hand-outs, knowledge and support are phenomenal, the hidden elements another level.... you will **love** it!

We've introduced a new topic going forward from this issue, based on the current reads of Martin and myself, you'll notice these at the foot of our welcomes. We hope you also find them an interesting read....if you have any suggestions for fellow students, please drop us a line with the title and author and we'll mention these in the next issue. Email to Martin at info@reikitrade.com. Namaste



Current read:

Signs, The secret language of the Universe by Laura Lynne Jackson

Read
More

see page 23



What's New!

You heard it here first...



We're excited to announce our brand new You Tube Channel



NOT ALREADY SUBSCRIBED?

No problem, you can follow the link and subscribe here



SUBSCRIBE

@ReikiTraditionSchoolofReiki

**CARD PAYMENTS
NOW ACCEPTED**



Payment can be made over the phone or in person

Special thanks to Steven for setting up the card terminal



**NEW FEATURE
OUR CURRENT READS**



Martin



Alisa

see page 35



YOU RECEIVE



Refer a Friend to attend any course and receive £10 when deposit paid

ANNOUNCEMENTS

LAST ISSUES WINNER COMPETITION TIME

JUST FOR TODAY PUZZLE



And the Winner is...



NO WINNING ENTRIES



TRY AGAIN!

SEE page 46

TEST YOUR KNOWLEDGE WITH
OUR REIKI WORDSEARCH



BATTERSEA

Wow! *thank you*



**SEE WHAT
YOU RAISED
ON PAGE 21**

The Pawsome World of



Reiki for Animals

see what's **FREE** *on page 27*

Congratulations!



Early August 2024, we saw our first students being presented with Accreditation Diplomas for our Pawsome World of Reiki for Animals. A very magical moment as these students are the first in the whole of the UK to be awarded this Accredited Qualification to now work as professional Reiki practitioners on Animals in Statutory Settings.

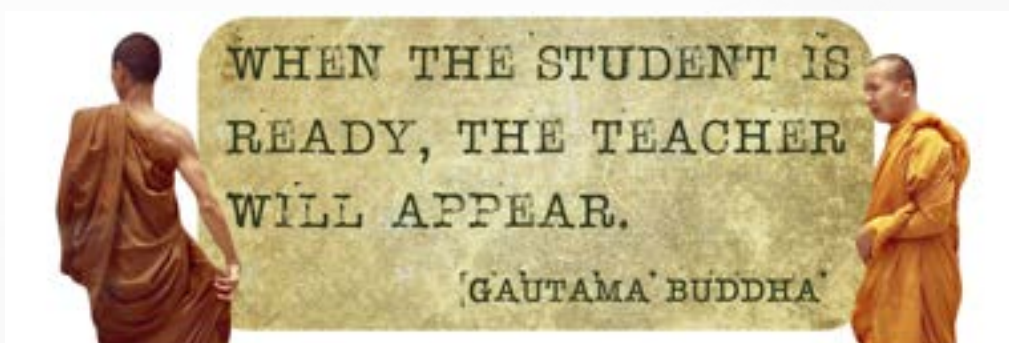


**A HUGE CONGRATULATIONS TO
Lorna, Janis, Alyson & Julie**

The end of June 2024 saw 6 new Masters' completing the Reiki 3rd Degree Master/Teacher course in the Lineage of the Usui Shiki Ryoho System.



**A MASSIVE CONGRATULATIONS TO
Alisa, Julie, Zane, Shital & Brenda**



DID YOU KNOW?

what ^{else} we do



Reiki Tradition
PRINTING SERVICE



Reiki Level 1, 2 & 3
Manual Printing

PROVIDED PRINTED & DELIVERED TO YOUR DOOR

CONTACT MARTIN ON 07966 149 365
OR EMAIL INFO@REIKITRADITION.ME.UK

- SIX DUPLEX LASER PRINTERS
- USUI LINEAGE
- QUICK TURN-AROUND
- WORLD-WIDE DELIVERY
- NO M.O.Q
- BRANDING AVAILABLE



THE HEALING ROOMS

176 Oldham Road, Springhead, Saddleworth, Oldham, OL4 5SJ



24 HOURS PER DAY

7 DAYS PER WEEK

365 DAYS PER YEAR



Reiki Therapy Room



Training Room



Counselling Room 1



Counselling Room 2

FOR more info call Martin

07966 149 365

YOUR TEACHER

Teacher Insights

Martin Robert Thirlwell

10th Generation Reiki Master

EXPERIENCE

- 40 years' experience in Reiki; solely in the traditional Usui Shiki Ryoho System of Natural Healing, (no other therapies taught)
- Speaker/Lecturer in Reiki supporting the Federation of Holistic Therapist (FHT)
- Co-ordinator for the FHT Manchester North Local Support Group
- Works with AGE UK Manchester Dementia clients providing Reiki
- Works supporting Oldham NHS Amputee Day Care Unit with Reiki
- Works supporting Reiki at all local Hospitals and Hospices in Oldham and surrounding areas, and training all current Reiki Practitioners to an Accredited Level to the Core Curriculum
- Works with Jane Tomlinson-Wightman Safe Active Birth Kendal. Teaching midwives to an Accredited Level to the Core Curriculum to allow them to work with Reiki in a NHS Environment
- Works with PossAbilities in Heywood. PossAbilities are a social enterprise organisation that supports vulnerable people so that they can live the life they choose



QUALIFICATIONS

- FHT Accredited Reiki Level 1, 2 and 3 (Master Teacher)
- 10th Generation Reiki Master (Usui Shiki Ryoho System of Natural Healing)
- FHT Full Professional Member
- CNHC Accredited Registered
- CHP Full Member
- AET Level 3 in Teaching and Education (the highest standard); this also allows teaching disabled children and adults with special needs
- Accredited Distinction in Regression and Psychoanalysis

FEATURE

Social Prescribing; GP Referral Systems



Social prescribing is a key component of Universal Personalised Care.

It is an approach that connects people to activities, groups, and services in their community to meet the practical, social and emotional needs that affect their health and wellbeing.

In social prescribing, local agencies such as local charities, social care and health services refer people to a social prescribing link worker.



Social Prescribing Link-Workers give people time, focusing on ‘what matters to me?’ to coproduce a simple personalised care and support plan, and support people to take control of their health and wellbeing.

Social Prescribing Link-Workers also support existing community groups to be accessible and sustainable, and help people to start new groups, working collaboratively with all local partners.

Social prescribing is an **all-age, whole population approach** that works particularly well for people who:

- have one or more long term conditions
- who need support with low level mental health issues
- who are lonely or isolated
- who have complex social needs which affect their wellbeing

Any Reiki practitioner who meets the following prerequisites can be accepted for Social Prescribing, Referral Systems and working with Private Medical Insurance Companies;

- Core Curriculum
- National Occupational Standards
- Classroom based training (65 hours)
- Lineage back to Usui Miko Sensei (1st Generation)
- Case studies (175)
- Full member of a professional organisation
- Member of the Complementary & Natural Healthcare Committee CNHC
- Listed on the Accredited Register
- Listed on the CNHC Accredited Register

It is important the practitioner has to demonstrate and prove they have been independently Certified and Verified and Accredited in the work they do.

GP's can refer to Complementary Therapist for treatments just as Private Medical Insurance Companies can refer to Complementary Therapist.

Gaining CNHC Membership and being registered on the CNHC



Accredited Register is essential, although not compulsory. Applying thereafter for Social Prescribing and Referral schemes will be much easier.

As a registered practitioner you have demonstrated that you meet UK wide standards and abide by a rigorous code of conduct.

Usually a Reiki Practitioner who meets all the Syllabus Standards and the above prerequisites will start the process of issuing a letter to their GP Surgery outlining and detailing their standards obtained.

A copy of this letter can be obtained from Reiki Tradition School of Reiki.

Reiki practitioners requiring membership to CNHC please contact me directly for all further information. This is a difficult task, simply because you just can't approach the CNHC; you have to go to a dedicated underbody of the CNHC who will then liaise with the CNHC for your membership.

Reiki Tradition are here to help and assist you making this process easy, simply because we are accredited with the underbody organisation of the CNHC; all our Students will be accepted by the CNHC.



靈氣 傳統

Reiki Tradition

Healing & Training Centre

Reiki Tradition School of Reiki has over 40 years' experience specialising and solely working in the **Usui Shiki Ryoho System of Natural Healing**

We are committed to preserving and conserving Reiki in its traditional form and entirety

Gokai Reiki Principles

Just for today...



Do not be angry



Do not worry



Be grateful



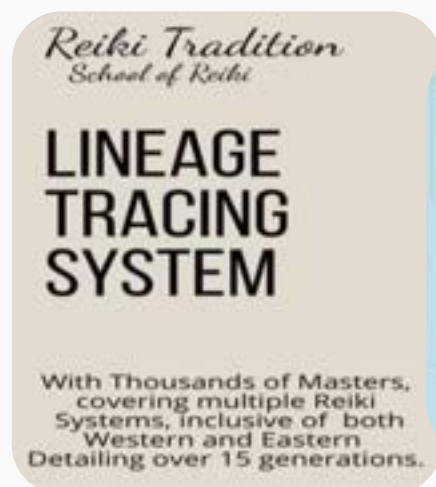
Do your duties



Be kind to others

LINEAGE TRACING SYSTEM

Brought to you by Reiki Tradition, School of Reiki



Feature by



Martin R Thirlwell
10th Generation Reiki Master

Around July 2016 I was inspired to create a Reiki Lineage Tracing System. Reiki Tradition School of Reiki continue the preservation and conservation of Reiki as it's intended in its original Eastern form and entirety.

The idea behind a Reiki Lineage Tracing System is to easily record all Masters in the Usui Shiki Ryoho System.

Once Masters are listed in the system it then becomes easy to search the name and produce a line back to Usui Mikao Sensei 1st Generation.

It took almost 6 years to develop the database and test for functionality. The system became live in 2022 and we now have over 10 thousand Master's listed on the system covering 8 specialities over 15 generations from both Western and Eastern.

There are only 2 Companies in the whole of the UK and Ireland offering such a tracing system; The UK Reiki Federation (UKRF) and Reiki Tradition School of Reiki.

The UKRF are specific to their own members with a cost of £25 per search.

Reiki Tradition School of Reiki is a **FREE** service to use, and we are not specific to our own students; our system is for anyone Worldwide.

It is fast becoming any Reiki Practitioner requiring membership to any organisation requires to hold a Reiki Lineage, this lineage should go back to Usui Mikao Sensei 1st Generation.



2022 we saw Northern Ireland creating the start of 15th Generation Reiki Masters.

Reiki Tradition School of Reiki continuation of our Tracing System is to archive the system for public access on a 24/7 basis.

A Reiki Lineage is a (tree) listing all Past Masters; it has to be emphasised, only Master's are listed on a Lineage along with the year they became Master.

To know if your lineage is a viable Usui Reiki lineage under the Core Curriculum (CC) and National Occupational Standards (NOS) some guidelines are given and listed below.

Lineages that follow a Western teaching Strategy and understanding, will always have these master's at the beginning of the lineage:

1st Generation

Mikao Usui Sensei

2nd Generation

Chujiro Hayashi Sensei

3rd Generation

Hawayo Takata Sensei

All lineages from Mrs Hawayo Takata Sensei would include one of the following Masters as 4th Generation.

They were the 22 Masters taught by Hawayo Takata Sensei.

George Araki
Dorothy Baba
Ursula Baylow
Rick Bockner
Patricia Ewing
Barbara Brown
Fran Brown
Phyllis Furumoto
Beth Gray
John Gray
Iris Ishikuro
Harry Kuboi
Ethel Lombardi
Barbara McCullough
Mary McFayden
Paul Mitchell
Bethel Phaigh
Shinobu Saito
Virginia Samdahl
Wanja Twan
Barbara Weber Ray
Kay Yamashita

If your Reiki Master is in the Hawayo Takata Sensei lineage, and his/her Lineage does not include one of those names listed above, you should ask your Master for verification or contact me for assistance.

There are also some Japanese lineages (e.g. those including either Hiroshi Doi Sensei or Chiyoko Yamaguchi Sensei) available that follow Japanese teachings.

If you are unsure about your lineage or have queries, please don't hesitate to contact me.

If you would like to contribute your lineage to our ever-expanding database, to help and preserve Reiki Lineages for generations to come, please use the Lineage Submission form found below.

<https://www.reikitradeition.me.uk/lineage>

The 'Add Lineage Record' form includes fields for: Identifier, First Name, Middle Name, Last Name, Student Number, Description, and 1st Gen Name through 13th Gen Name. To the right, a table lists existing records with columns for Student No. and Lineage.

Student No.	Lineage
265	Shod Reiki
276	Shod Reiki
281	Shod Reiki
282	Shod Reiki
295	Shod Reiki
307	Shod Reiki
308	Shod Reiki

Reiki Tradition
School of Reiki
Lineage Tracing System

The main menu features buttons for Master List, Lineage, and Add Record. It also displays 'Todays Date: 14/10/2022' and a Reiki symbol.

The interface shows a search bar with fields for Id, First Name, Last Name, Student No, and Lineage. Below the search bar is a table with 7 rows. Buttons for Open Lineage, Query, and Clear Search are at the bottom.

Id	First Name	Last Name	Student No	Lineage
1				
2				
3				
4				
5				
6				
7				

*Simple &
Easy Use*

COURSE INFO

Reiki Level 1 (1st Degree)



£95
LIKE for LIKE



GUARANTEED



Reiki 1st Degree

HELD OVER 2 CONSECUTIVE DAYS

Start 10am | Finish 5.45pm
45 minute lunch break

21st & 22nd September

2024

COURSE HIGHLIGHTS

- Duration time of course 15 hours
- Introduction to and history of Reiki
- 4 Attunements to activate the Reiki energy
- Understanding the Spiritual side of Reiki
- Introduction to the Chakra system
- Reiki Precepts (Gokai)
- Basic anatomy
- How to perform a Treatment
- Couch and Chair positions
- Hands on practice
- Self-healing techniques
- The intent to heal and activating the Reiki energy
- The Hidden Elements
- Further ways to use Reiki



PREREQUISITIES

- None

COMPLIES TO STANDARDS

- Core Curriculum (CC)
- Qualifications Credit Framework (QCF)
- National Occupational Standards (NOS)
- Code of Conduct set out by the FHT
- The Complementary and Natural Healthcare Council (CNHC)

Further information available on our website

<https://www.reikitrade.com/1st-degree-course>

CLICK ME

SCAN
ME



COURSE INFO

Reiki Level 2 (2nd Degree)



Reiki 2nd Degree

HELD OVER 2 CONSECUTIVE DAYS

Start 10am | Finish 5.45pm
45 minute lunch break

7th & 8th September **FULL**

5th & 6th October

9th & 10th November

2024



£200

LIKE for LIKE



GUARANTEED

COURSE HIGHLIGHTS

- Time duration of course 15 hours
- 4 Attunements
- The passing and memorising of 3 Reiki Symbols
- The technique and practice of Distance Healing
- Learning the Hidden Elements
- Professional Working Standards
- Keeping Records and GDPR
- Working in clinical environments

PREREQUISITIES

- Reiki Level 1 (1st Degree)

COMPLIES TO STANDARDS

- Core Curriculum (CC)
- Qualifications Credit Framework (QCF)
- National Occupational Standards (NOS)
- Code of Conduct set out by the FHT
- The Complementary and Natural Healthcare Council (CNHC)



Further information available on our website

<https://www.reikitrade.com/2nd-degree-course>

CLICK ME

SCAN
ME



COURSE INFO

Reiki Level 3 (3rd Degree) Master / Teacher



Reiki 3rd Degree
HELD OVER 6 EVENINGS

Monday
Start 7pm | Finish 9.15pm
7th October
14th October
21st October
28th October

Friday
Start 7pm | Finish 10.15pm
1st November

Saturday
Start 7pm | Finish 11.15pm
2nd November

2024



COURSE HIGHLIGHTS

- A further 4 Attunements
- The passing of an additional 4th Symbol (Reiki Master)
- The passing of a 5th additional Attunement Symbol
- How to prepare and teach the Reiki Degrees
- How to pass Attunements



PREREQUISITIES

- Reiki Level 1 (1st Degree)
- Reiki Level 2 (2nd Degree)
- Full understanding & ability to draw fluently the Reiki 2nd Degree Symbols
- Full understanding & ability to recite the Usui Shiki Ryoho Reiki history

COMPLIES TO STANDARDS

- Core Curriculum (CC)
- Qualifications Credit Framework (QCF)
- National Occupational Standards (NOS)
- Code of Conduct set out by the FHT
- The Complementary and Natural Healthcare Council (CNHC)

Further information available on our website

<https://www.reikitrade.com/3rd-degree-master-course>

CLICK ME

SCAN
ME



Very soon... this could be you



Photos courtesy of some of our amazing course attendees 2024



When you teach from the *Heart*
You reach the *Soul* of the Student

SWITCHING TO ACCREDITED

Changed your mind?

NO PROBLEM....

**At Reiki Tradition School of Reiki
we make it so easy for students to switch**



**No matter what stage the student is currently
at we can change you over to Accredited**

PAYMENT PLANS

How we can help

**Here at Reiki Tradition School of Reiki, we like to help
and assist potential students to gain the prestigious
Reiki Accredited Qualification.**

We understand that you may want and even require an Accredited Qualification to allow you to work professionally within Statutory Settings with Reiki, if either you work single handidly or part of much larger multi-disciplinary teams in voluntary or paid positions within the NHS, Care Homes, Hospices or even veterinary surgeries working with animals.



www.reikitradeition.me.uk/accredited-students-payment-plan

Once the initial fixed deposit has been paid we will supply all necessary paperwork to allow you to start with progressing with Case Studies



**For further info on our
EASY PAYMENT PLAN**

Click me OR Scan me
I'll take you straight to our website



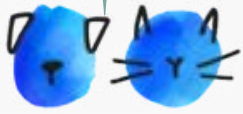
Students taking advantage of our 0% Easy Payment Plan, certification will be presented once the student has completed all course training hour, submitted all case studies and has paid in full

**FOR FURTHER INFORMATION
ON SWITCHING TO ACCREDITED OR OUR EASY PAYMENT PLAN
SEE ISSUE 1 (SPRING 2024)
OR CONTACT MARTIN ON 07966 149 365**

UPDATE

PAWSOME WORLD OF REIKI

FOR ANIMALS



BATTERSEA

[CLICK HERE](#)
Battersea Website

thank you

FOR ALL YOUR
KIND DONATIONS



YOU raised a
staggering **£634.20**
with your
donations for
Battersea when
attending The
Pawsome World of
Reiki for Animals
during 2023.

We are so proud to receive £634.20 in our Battersea Donations box,
this has been collected over the last 12 months

Both myself and Lynnette would like to thank you from the bottom of our
hearts everyone who made this possible

Early August this year saw us carry out
our very first Accredited Qualification
Presentations for our Pawsome World
of Reiki for Animals which students
have fully completed.

This course took 3 years in the making
to be Certified, Verified and
Accredited and then to meet all the
Syllabus Standards including the
Veterinary Surgeons Act and the Code of
Professional Conduct for Veterinary
Surgeons.

This course is the only one within the
UK and Ireland free to attend and
where students get to practice on real
Animals with real illnesses.

Seeing the first students being
presented with Accreditation Diplomas
was a magical moment as these students
are the first in the whole of the UK to be
awarded this Accredited Qualification to
now work as professional Reiki
practitioners on Animals in Statutory
Settings.



A massive congratulations to, Lorna
Marsh, Janis Sedgewick, Alyson
Littlewood and Julie Mellor



COURSE
info

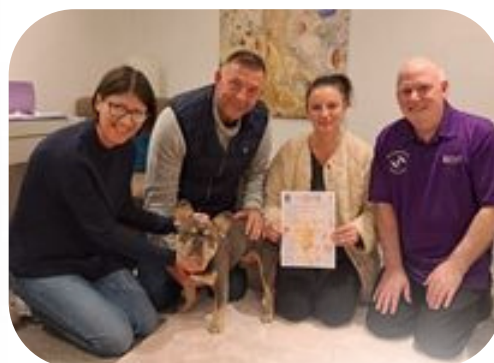
LEARN

MORE ON THE
OTHER SIDE



PAWSOME WORLD OF REIKI

FOR ANIMALS



CPD ACCREDITED COURSE

The Pawsome World of Reiki for Animals



THE POWER OF REIKI

Reiki helps with a number of things that our animals present to us

Anxiety, Stress, Pain, Behavioural Issues; The power of Reiki would help both owner and animal live in a more comfortable and calmer environment together. As a reiki practitioner you would be able to understand your animals emotions and be able to help soothe those feelings.

'**The Pawsome World of Reiki for Animals**' is especially for animals and animal lovers and carers; whether that's at home or in a professional environment.

We will **talk and guide** you through Reiki healing and how to help your animal with any ailments present.

We will give you **guidance and knowledge** on reading an animal's body language and talk and demonstrate everything regarding Reiki for Animals.

So, whether you're a pet owner or a professional or wanting to work within the animal world this course is for everyone to help animals live a **Happier, Healthier, Holistic Life.**

This course gives you the unique opportunity to practice on real animals with real ailments.

NEXT AVAILABILITY

see page 23

NEXT AVAILABILITY

Saturday & Sunday

COURSE DATE IN MONTH TBC

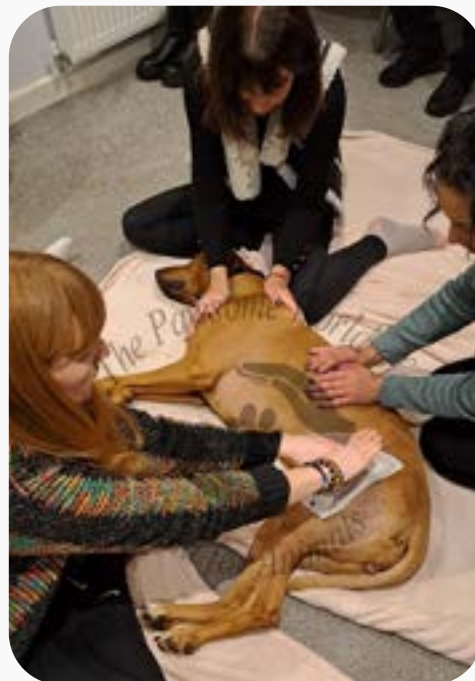
Start 10am | Finish 5pm

2024

November
December

2025

January
February



This CPD Accredited Course meets the Syllabus Standards of;



The National
Occupational
Standards
(NOS)

Lanact1 Lanact3
Lanact2 HA7404



Complementary
Health
Professionals
(CHP) Code of Conduct



Reiki Council
Reiki for Animals
(RC)

Please use the links below:

To **ATTEND** this **FREE** Course and gain this **Accredited Qualification**, simply register your interest here:

<https://www.reikitradeition.me.uk/register-your-interest-to-attend>

To read all about the Pawsome World of Reiki for Animals, the prerequisites and the course itinerary please use the link below:

<https://www.reikitradeition.me.uk/paw-some-world-of-reiki-for-animals>



This **FREE** Course is very popular, we kindly suggest registering interest ASAP for courses commencing **September 2024 until February 2025**

UPCOMING EVENTS

... and some are

FREE!

AWARENESS & DEVELOPMENT

THIS IS A VERY SPECIAL EVENT LIMITED TO 8 ATTENDEES

NEXT AVAILABILITY
HELD OVER 12 CONSECUTIVE EVENINGS

Wednesday 11th September
THEN EACH CONSECUTIVE WEDNESDAY FOR 12 WEEKS

Start 7pm | Finish 9.15pm



**SO, YOU MAY ASK;
'WHAT WILL I LEARN'**

Upon completion you will have the
ABILITY, KNOWLEDGE & FULL
UNDERSTANDING OF SPIRIT
Link to Spirit & give basic Readings & Messages

£120

ONLY £10 PER WEEK

All our Reiki Practitioners have a full understanding of Spirit & Guides
this event will definitely help in your work, either working on humans or Animals

EVENT INSIGHT

Our current Awareness & Development Group is a small of 6 students which has been running since mid February this year.... I can honestly say they're doing terrific within a period of only 6 weeks, (only around 12 hours). Students now fully understand the way Spirit communicate and are able to give and receive basic messages.

Last Friday evening the group met Zoe Gregory a personal friend and practitioner of Reiki Tradition School of Reiki. Zoe demonstrated her skills of Physic Writing.

This is a superb evening with lots of student participation. Zoe and myself will guide the Guides to enable the students to pick up the pen and start to write from Spirit vibes and start to write from spirit.

WE HAVE SUPERB RESULTS, SPIRIT ARE
ALWAYS EAGER TO SHOW AND DEMONSTRATE
THEIR SKILLS



This event is
a must for
anyone curious
or just simply
wanting to work
with Spirit

UNDERSTAND
HOW WE &
SPIRIT
COMMUNICATE



HERE'S WHAT YOU'LL LEARN

SCROLL DOWN
FOR MORE
INFO

ON THIS EVENT

We start at the very beginning

AWARENESS

We then move on to

DEVELOPMENT

- Become aware of Spirit for the very first time
- Basic signs & communications skills
- Fully understand when Spirit are communicating & how easily to pick-up on this new energy
- How to communicate back
- Understanding presence

- Development continues on from Awareness
- Develop your new found skills of Awareness
- Development takes you into the area & field of Mediumship
- Makes the bond between physical & Spirit stronger

SPIRIT USE A WHOLE RANGE OF ITEMS IN OUR PHYSICAL WORLD TO COMMUNICATE

Here we demonstrate these items to you, you then have the opportunity to have a go yourself

UNDERSTANDING

- Opening Spiritual discussion
- Vibration, Frequency & Energy
- Our conscious mind
- Spirit; how we miss the signs & communication
- Gut feelings, Colours, Pictures or just a sense or feeling
- Auras;
 - Seeing each individual colour of our own & then looking & seeing other's Auras
- Spirit energy within our energy field
- How spirit communicate with us

COMMUNICATING

- Feel & sense for the first time Spirit communication
- We start to build on this communication
- Communication Skills
- We let Spirit give us chosen objects, colours, fabrics etc
- We start linking to other attendees and giving basic messages
- Flower reading

INTRODUCING

- Pendulums
- Tarot Cards
- Crystal Ball
- Physic writing – WITH GUEST SPEAKER
- Physic drawing
- Psychometry
- Configuration

ALL of this and much more including GUEST SPEAKER



When you teach from the *Heart*
You reach the *Soul* of the Student

Reiki Tradition
SCHOOL OF REIKI
www.reikitradeition.me.uk
FOR more info call Martin 07966 149 365

UPCOMING EVENTS

HEAR it here **FIRST**

BEAT YOUR EGO



Two Events Yearly
Wednesday Evening
Start 7pm | Finish 9pm

ON THIS EVENT

Learn how to manage & work with ego, clear your mind of busy random thoughts, working with clear minds is essential when working with spirit & energy



AWARENESS & REGRESSION



Two Events Yearly
Two Consecutive Friday Evenings
Start 7pm | Finish 9pm

ON THIS EVENT

On the first session we learn how to become Aware of Spirit, the second we take you back to a past life you once lived

FHT LOCAL SUPPORT GROUP



The purpose behind the LSG is to arrange four meetings a year, when we invite professional speakers to come along talk & also demonstrate their therapy, skill, hobby in fact anything that will be interesting for others to learn from

Door Entrance Fee:

FHT Members* £8

Non-Members £10

Students* £5

**please bring membership/student card*

MANCHESTER NORTH
Local Support Group
Start 7pm | Finish 9pm

ON THESE EVENTS

WE bring you Expert Speakers demonstrating an array of therapies all with audience participation. These are great evenings for you to come along to meet like minded people & a chance to network

Recent events include;

- Basic First Aid & CPR with *FREE 12 month certificate incl.*
- Sign Language
- Beginners Pendulum Dowsing
- Beginners Reiki
- Yoga
- Crystal Healing
- Reiki for Animals
- Indian Head Massage
- Cupping
- Reflexology



INTERESTED

in any of our upcoming events

Simply register your interest here and we'll be in touch very soon



Email: info@reikitradiation.me.uk



HAVE A LOCAL
SUPPORT GROUP
MEETING ON US!



*FIRST 6 EMAILS RECEIVED WILL RECEIVE 1 FREE VOUCHER



This voucher entitles you to free attendance* at our Manchester North Local Support Group. Meetings offer you the opportunity to:

- Hear from expert speakers about the latest Therapies and Treatments
- Earn CPD points
- Take part in social events, local therapy workshops, fairs and events
- Enjoy treatment swaps and sharing best practice
- Feel a part of a large therapy community and have fun

You don't have to be an FHT member to attend, so feel free to bring a friend!

A small door #entry fee is usually required so why not grab a FREE voucher and have one on us!

FOR OUR NEXT
FHT EVENTS



see pages
28 & 29

#Door Entrance Fee:

FHT Members* £8

Non-Members £10

Students* £5

*please bring membership/student card



JUST FOR TODAY | 28

EMAIL
info@reikitradeition.me.uk



*TERMS & CONDITIONS APPLY: 1 EMAIL PER PERSON

JUST FOR TODAY | 27

NEXT FHT EVENT

Animal Healing



**MANCHESTER NORTH
Local Support Group**

Monday 23rd September 2024

Start 7pm | Finish 9pm

Venue

The Therapy Rooms, 176 Oldham Road, Springhead, Oldham, Lancs, OL4 5SJ



ON THIS EVENT

Our very own Lynnette Jackson from The Pawsome World of Reiki for Animals joins us this evening to demonstrate Animal Healing with real dogs and with real conditions.

Lynnette professionally works with animals as a Canine Hydro-therapist and also in a veterinary clinic. Lynnette is also 11th Generation Reiki Master.

We are a nation of animal lovers and don't want to see our animals suffering; this evening is designed to give you the tools to assist and help with ailments that your pet may have, such as stress, anxiety, pain or general wellbeing .

This is going to be a very special event as you will be able to have a go and practice on the animals.

It must be mentioned that healing on animals is a complementary therapy and compliments any holistic care and also veterinary care your animal may be receiving and that should continue and not be withdrawn.

This Event is open to everyone not just FHT Members.

If you would like to attend please contact Martin ASAP

Door Entrance Fee

FHT Members* £8 | Non-Members £10 | Students* £5

**please bring membership/student card*

NEXT FHT EVENT

BASIC FIRST AID & CPR



**MANCHESTER NORTH
Local Support Group**

Monday 29th November 2024

Start 7pm | Finish 9pm

Venue

The Therapy Rooms, 176 Oldham Road, Springhead, Oldham, Lancs, OL4 5SJ



SUPPORTED BY FHT



ON THIS EVENT

We welcome back Jane on her fourth visit to the **The Therapy Rooms** speaking at our FHT Local Support Group.

Jane will be teaching us **Basic First Aid & CPR**.

An evening GUARANTEED not to be missed.

You will be presented with a **FREE 12 months First Aid Certificate** at the end of the evening, along with a **CPD Certificate of attendance**.

This Event is open to everyone not just FHT Members.

If you would like to attend please contact Martin ASAP

Door Entrance Fee

FHT Members* £8 | Non-Members £10 | Students* £5

**please bring membership/student card*

ADDED VALUE

THE EXTRAS COMPLETELY FREE OF CHARGE WHICH THE ON-LINE COURSES DON'T GIVE YOU

FREE!

REIKI SHARES

What is it?

Reiki Shares are a great opportunity to practice your Reiki, become more confident, meet and network with like-minded people.

Who is it for?

YOU!!..... whether you're a Reiki 1, 2, 3 (Master) or considering attending any of our Reiki Courses come along..... come along have a go, ask as many questions as you like; it's a great experience.

NEXT AVAILABILITY

Start 1pm | Finish 4pm
Sunday 22nd December



TOP-UP ATTUNEMENTS

What is it?

Feeling you are getting run down, tired, lethargic, Need a boost?.... then come along for a Top-up Attunement

Who is it for?

Reiki 1, 2, 3 Reiki Tradition Course attendees

NEXT AVAILABILITY

Start 1pm | Finish 4pm
Sunday 24th November



DID YOU KNOW?

FREE

USE OF OUR REIKI HEALING ROOM
FOR REIKI TRADITION STUDENTS CASE STUDIES

For more info call Martin
07966 149 365



24/7
365
24 HOURS PER DAY
7 DAYS PER WEEK
365 DAYS PER YEAR

FEATURED STUDENT

It's our aim each quarter to feature a Selected Student, for their outstanding work, dedication and passion towards Reiki

Sharon Whiteley



Hello, my name is Sharon Whiteley; I am a 11th Generation Reiki Master of the Usui Shiki Ryoho system of Natural Healing.

I started my journey with reiki in 2007 when I did my level 1 at Oldham college then 6 months later in 2008 I did my level 2. I knew I wanted to work in a hospital or hospice offering reiki and reflexology but realised I needed an accreditation qualification to work in a Statutory Setting, so I then found Martin the owner of Reiki Tradition School of Reiki, who I did my Reiki 3rd Degree Master/Teacher level with.

I now assist on lots of courses with Martin. I got the opportunity to volunteer at Springhill Hospice after going part-time in my job.

When I first started at the hospice I worked with the cancer patients on day-care also going onto the in-patients ward and in the afternoon I would get referrals from the counselling team to help with bereavement. Unfortunately, Covid then came and it was a while before I could go back in. I now work with the dementia group that they have there on Wednesday morning. Reiki really helps the dementia group, it's very calming for them and they enjoy their treatments.



In July 2024 I was awarded the 5-year volunteer achievement award for working at the Hospice for a period of 5 years. I had to attend a special lunch where I was rewarded for my continuing work.



I am also currently awaiting a start date at the Oldham Renal Dialysis Unit; I have been accepted and passed all checks so just waiting to start.

Reiki has certainly been a massive part of my life; I love seeing how people react to the energy of Reiki x

DR LANG, FRCS

A Surgeon Working from Another World



Dr William Lang 1852–1937

Dr Lang was an Ophthalmic Surgeon working from a London Hospital on 1 October 1870. Here he was house surgeon, house physician, and demonstrator of anatomy and physiology, and came into close touch with James Edward Adams, whose clinical assistant he was.

In 1881 he was elected ophthalmic surgeon to the Middlesex Hospital, on the resignation of George Critchett, and held office until 1914.

From 1884 to 1912 he was surgeon, at first an assistant surgeon, to the Royal London Ophthalmic Hospital, Moorfields, where he succeeded his former master, J E Adams, who had become totally blind.



Lang was a great clinical teacher, and a good operator in spite of a marked tremor of his hands

He had a mechanical mind and invented a speculum which guarded the lashes and kept them out of the field of operation, twin knives for the division of synechiae, a lachrymal syringe, a blunt dissector, and a scoop.

He was, too, amongst the first to advocate an artificial globe in the capsule of Tenon after enucleation, as a means of preventing the deformity following shrinkage of the orbital tissues and so permitting good movement of the artificial eye.

He was an original member of the Ophthalmological Society founded in 1880, was a vice-president and served as interim president in 1903 when Dr David Little died during his year of office.

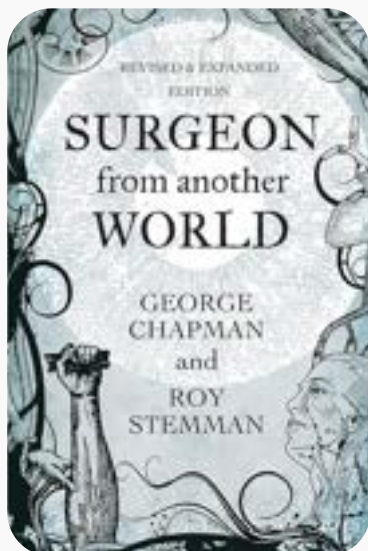
He was also a prominent member of the ophthalmological section of the Royal Society of Medicine, where he was president in 1916-17.

He was amongst the first to recognise the importance of focal sepsis as a cause of chronic inflammatory disease of the eye, for instance that iritis which used to be thought of as rheumatic in origin was more often due to septic teeth.

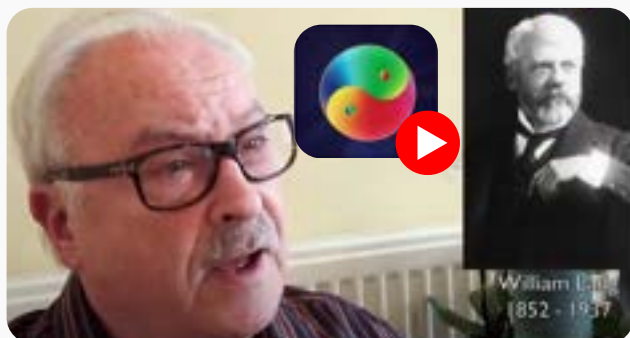
This leads me to George Chapman (1921-2006), who partnered with the then deceased Dr Lang in the practice of spiritual healing.

A superb read is 'Surgeon from another World' by George Chapman and Roy Stemman shown below.

Chapman had never met Lang and had never heard of him before Lang started controlling him shortly after he discovered his mediumistic abilities in 1946



Roy Stemman has been researching a range of paranormal subjects since his teenage years. Roy Stemman is a professional journalist and self-described "skeptical believer". Roy applies a scientific analysis of the claims made by those working in the fascinating area of reincarnation and the author of numerous books.



Dr William Lang's Return From the Grave with Roy Stemman is a great video to watch on YouTube; click the link above.

Further reading and video's to watch are via the website below, click the link for direct access.



I TEACH EVERY STUDENT THE WAYS DR LANG WORKS

Dr Lang continues to visit the Therapy Rooms to carry out treatments on the eyes of our clients.

Dr Lang is known for his great work on Glaucoma of which I have had personal experience many times seeing him work.

Dr Lang recently worked on three abscesses in my own eye; within 2 weeks my eyes were healed.

Martin

FREE

FOR
STUDENTS
USE
OUR LIBRARY AT
THE THERAPY ROOMS



OUR FREE LIBRARY
IS FOR THE USE OF
ANY REIKI
TRADITION SCHOOL
OF REIKI STUDENT
& IS BUILT ON AN
ELEMENT OF TRUST
THAT ANY ITEM
LOANED WILL BE
RETURNED



Reiki Tradition
SCHOOL OF REIKI

A small School
with a BIG heart

Reiki Tradition
SCHOOL OF REIKI

www.reikitradeion.me.uk

FOR more info call Martin 07966 149 365

When the student is ready,
the teacher will appear.

-Buddhist Proverb



Reiki Tradition

School of Reiki

- Specialise & solely working in the;
Usui Shiki Ryoho System of Natural Healing
- Committed to preserving & conserving Reiki in its
traditional form & entirety
- Over 40 years' experience

We value the importance of teaching to high
standards and sharing the infinite knowledge of the
Usui Shiki Ryoho System of Natural Healing to all

靈氣

OUR CURRENT READS

The more that you read, the more things you will know.
The more that you learn, the more places you will go



In our new feature each issue we will bring you the book we are currently reading which we have found inspiring and a useful addition to our own library and continued learning. If you would like to recommend a book you'd like to share with readers for the same reasons, please drop us a line with the title and author and what you've found useful within the book.



Martin Robert Thirlwell
10th Generation Reiki Master
Reiki Tradition Owner



Healing in a Hospital by Sandy Edwards

I have known Sandy for many years and was privileged to receive a signed copy of her book in 2017.

Sandy trained to be a spiritual healer, ten years later she instigated one of the largest healing trials in the World.

The book details Scientific evidence that healing improves health. The book also details and is a unique story of;

- A healer working alongside a Senior Consultant in a National Health Service (NHS) Hospital.
- A top university renowned for first rate research conducting a controlled medical trial of healing.
- The National Lottery awarding a grant of £205,000 to fund the study.
- The results of a two year trial involving 200 hospital patients with longstanding illnesses.

The compelling research results help demonstrate that healing had the potential to benefit anyone whether they are in pain, sick, stressed or depressed. Verifiable case studies add to the evidence.

Since this research, we are seeing more and more Reiki Practitioners working within Statutory Settings either single handedly or part of much larger multidisciplinary teams.



Alisa Brook
11th Generation Reiki Master
Editor: Just For Today



Signs, The secret language of the Universe by Laura Lynne Jackson

Laura Lynne Jackson is a psychic medium who passes on messages of love and healing, and imparts a greater understanding of our interconnectedness. Although her abilities are exceptional, they are not unique, and that is the message at the core of this book; we all have the ability and to understand 'the secret language of the universe' is a gift available to all, as we learn to ask for and recognise signs from the other side.

STANDARDS

Rest assured when selecting Reiki Tradition School of Reiki as your training provider you are receiving the very best training within the Reiki Industry



Reiki Tradition
Stand up for Standards

All our courses are run to the Syllabus Standards of the:



Core Curriculum



National Occupational Standards

**We're an Accredited Training Provider
Certified and Verified
by leading organisations**



Federation of Holistic Therapies
(FHT)



Complementary &
Natural Healthcare Council
(CNHC)



Complementary Health Professionals
(CHP)



Reiki Council
(RC)

We're the Training Provider with the highest of standards

MEMBERSHIP

What are the benefits of becoming a member of any organisation or society?



Feature by



Martin R Thirlwell

10th Generation Reiki Master

A question I get asked many times from past and current students

It is priority for any Reiki Practitioner requiring to work professionally to demonstrate and show, to the General Public you **‘Stand up for Standards’** and that you have been individually **Certified and Verified** that you meet all standards for the work you do.

This later will help and assist if a Reiki Practitioner requires to work within Social Prescribing, GP referral schemes and or Private medical insurance. We will cover all this later.

We are currently living in a society where integrated healthcare is becoming more forefront especially within the NHS and private medical care sectors. I can only speak for and regards Reiki as this is what I specialise in.

To start, Reiki is becoming more known as more people are undergoing training; the results of Reiki treatments around Cancer Patients and Dementia is becoming increasingly known about.

Seeing Reiki being used within Statutory Settings is rising every day. Reiki is certainly rippling through Statutory Settings.

But how does this affect the standard a Reiki Practitioner has to work to, and conform to?

A high number of Reiki Practitioners after completing 2nd Degree (Practitioner) Degree, require to further work with Reiki in a more professional manner.

Maybe they are contemplating on a new career into becoming a professional Complementary Therapist, either working from home or choosing to work from a small business premises.

Whatever the situation, Students then require to increase and broaden their capacity working with Reiki, gaining more clients is always number one priority.

It has to be mentioned here that for a Reiki practitioner to work professionally within Statutory Settings or Social Prescribing, strict training to the Syllabus Standards of the Core Curriculum and National Occupational Standards is required and essential, students are also asked to be listed on the Accredited Register.

Safeguarding the General Public is essential and priority. (Stand up for Standards) written by the Complementary & Natural Healthcare Council CNHC.



LET'S EXPLAIN...

The first stage, is to show and demonstrate you are Professional, and that you **Stand up for Standards**.

Become a member of an organisation or society but *not* just any organisation or society, it has to be one that owns an Accredited Register.

I personally chose the Federation of Holistic Therapist (FHT).



The FHT are the UK's Largest complimentary therapist organisation with thousands of members worldwide offering hundreds of different therapies.

Better still the FHT own their own Accredited Register and the policies and Standards the FHT adhere to are by far the highest.

REASON FOR ACCREDITED REGISTER

A Reiki Practitioner demonstrating and showing Standards ideally needs to be registered on an Accredited Register.

This doesn't mean the named Practitioner is Accredited, it simply means the Practitioner has undergone a process of Verification the governing body that the Practitioners training meets all the Syllabus requirements.

Once approved and the practitioner has chosen 'Full Membership' will he/she be then listed Registered on the Accredited Register. Basically the Governing body has Guaranteed the Practitioner.

Accredited Registers are accountable to parliament. General public seeking a guaranteed Certified, Verified Practitioner can search the Accredited Register by nNme, Post Code, Area, or simply the name of the Therapy; all Certified, Verified Practitioners meeting the prerequisite will be listed.

There are four membership packages available

Student Member

only for students complying with case studies and are required to obtain insurance to work on the General Public. Once case studies are completed the student is upgraded to Full Membership.

Full Member

all the frills, Personal Page, Listed on the Accredited Register, lapel badge. Students requiring Membership with the FHT simply mention Reiki Tradition for a 10% discount.

Associate Member

FHT Friend membership with no frills, No personal page, No Accredited Register recognition, no lapel badge.

*International Member available for those not UK residents

Click Here
TO VIEW FHT
MEMBERSHIP
WEBPAGE

	Student Member	Full Member	International Member	Friend of FHT
Professional status and recognition Showing that you maintain high standards in therapy practice	✓	✓	✓	✓
Membership card To hold and show that you are an FHT therapist	✓	✓	✓	✓
Professional certificate To display in your therapy practice		✓	✓	
Membership logo To use on your marketing materials	✓	✓	✓	
A lapel badge To wear on your work uniform to show clients you are an FHT member	✓	✓	✓	
Tailor-made insurance policy including treatment insurance for students to practise outside college *Available at additional cost	✓	✓		
A listing on our FHT Therapist Register Quality mark of high standards, showing that you are vetted and insured. View here		✓	✓	
Access to seminars, workshops and CPD including our yearly training event, to help with your continuing professional development (CPD) *Available at additional cost	✓	✓	✓	✓
International Therapist Magazine Receive copies of our exclusive members only magazine, delivered direct to your door each quarter for news, articles and inspiration	✓	✓	✓	✓
Therapy articles and industry news Receive our members-only e-newsletter, <i>FHT News</i> , packed with industry news, updates and exclusive member offers	✓	✓	✓	✓
Local Support Groups Meet with like-minded therapists across the UK. Gain support and have the opportunity to network in the therapy community. View more here	✓	✓	✓	✓
FHT Excellence Awards Enter our prestigious <i>Excellence Awards</i> each year for the chance to have your work as a therapist recognised and celebrated	✓	✓	✓	
Discounted products from the FHT shop From high-quality equipment to therapy supplies, exclusive to members	✓	✓	✓	✓

Practitioners requiring to work with Social Prescribing (see earlier feature) and GP Referral Systems, are required to hold Full Membership and be listed on an Accredited Register.

They ask that practitioners are also listed on the **Complementary & Natural Healthcare CNHC Accredited Register**.

Please contact Reiki Tradition School of Reiki regarding the CNHC further information on the CNHC Accredited Register will be published in the Autumn Issue (No 3) of the Newsletter.

FINAL THOUGHTS

On the benefits of becoming a member of a professional organisation

- Accountability to the general public you have been Certified and Verified
- That you Stand up for Standards
- That you are registered on the Accredited Register
- That you can show your Membership Card as proof of Membership
- Being able to wear your lapel badge with pride
- That you always have the best interest of the general public at your heart
- Being able to work with Referral Systems
- Being able to register and work with Social Prescribing
- Being able to work with private medical insurance Companies

**DID YOU
KNOW?**

MENTION

REIKI TRADITION
School of Reiki

GET
£10

OFF
FHT MEMBERSHIP



INTERESTING FACT

**DID YOU
KNOW?**

With FHT MEMBERSHIP

You also have access
to their DBS
(Disclosure & Barring
Service) Vetting
Scheme

INTERESTING FACT

GIVING BACK

Our volunteer work



Reiki Tradition School of Reiki have many alliances with hospitals, hospices and care homes throughout the UK. Here we are able to volunteer Reiki Treatments to sick and very poorly people.

Our feature hospital this issue is **Rochdale Pennine Acute Medical Ward**

It's always a great day attending the acute medical ward. Meeting all the Doctors, Nurses and Staff.

We were initially asked to attend by Deborah Stott a student of Reiki Tradition School of Reiki who is an active nurse at NHS Oldham Hospital and Hannah lead nurse at NHS Rochdale Pennine Acute Ward.

The day usually starts by taking over an empty ward.

We re-arrange the beds away from the wall taking off the head and bottom boards to allow us access all around.

Symbols are drawn into all corners, beds and crystals. Soft low volume music is played and the ambiance is set.



Empty Ward at NHS Pennine Accute Ward prior to moving beds away from wall



Beds are moved away from wall and head / foot boards removed for easy access.

Here you can also see Sharon drawing Reiki Symbols in corners of the room

Hannah, lead nurse, does a superb job with a list of everyone ready to receive a Reiki Treatment.

Usually we do three treatments at a time for 20 minutes each.

We invite anyone to come join us, this gives the practitioner, confidence and knowledge and more understanding working within Statutory Settings, meeting new people and a chance to network.

We usually visit Rochdale Pennine Acute Medical Ward each quarter.



Sharon drawing Reiki Symbols on the bed prior to treatments commencing

To join us or if you require any further information please do not hesitate to contact me, I'll only be too pleased to offer my assistance.



FEATURE

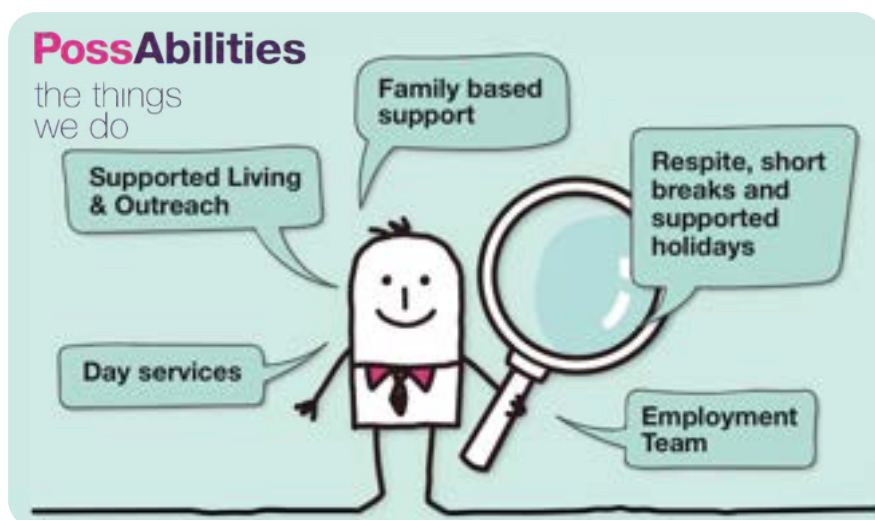
PossAbilities.... who they are, and what they do



Reiki Tradition School of Reiki were first contacted by **PossAbilities** in 2022 with a view of training and teaching a number of their staff the '**Usui Shiki Ryoho System of Natural Healing Reiki**'. Here's a feature on who they are and what they do within our local community

Firstly, I'd like to introduce **PossAbilities**, a social enterprise who support vulnerable people so that they can '**live the life they choose**'.

Mostly they support people with learning disabilities, young people leaving care and people with dementia... though they do lot's of other great things too.



PossAbilities don't have any complicated statements that nobody can understand, or anything like that. Just a clear and simple set of values that they try to live by every day.





The Cherwell Wellbeing Hub, Heywood

Staff at PossAbilities are given a monetary incentive each year to choose a therapy they're interested in, and then to learn that therapy for the use of PossAbilities staff and clients. If the selected therapy is taught to the Syllabus Standards, then finances are approved, and the staff can attend the selected course.



Cafe, Pet Farm & Florist; public welcome

The idea was that the staff can then implement their new skills of Reiki to give treatments to staff and clients and all Attendees of PossAbilities with wellness days etc. In 2023 we started the training process of 1st and 2nd degree courses.

Early 2024 I was contacted again by PossAbilities that the incentive is running again, and a number of staff have selected Reiki Tradition School of Reiki Training again. July 2024 sees the first of staff attending our 1st degree course.



Water Dragon, Cherwell Resident

I was honoured to accept an invitation to attend a meeting at PossAbilities to go and look around, view the premises and view the work they do. Both Lynnette Jackson one of our assistants and I attended. WOW! Did we have a fantastic day! We were made to feel so welcome and at home.



Pheasant, Cherwell Resident

PossAbilities is on the edge of almost requiring a zoo license because the amount of animals they home is quite overwhelming.

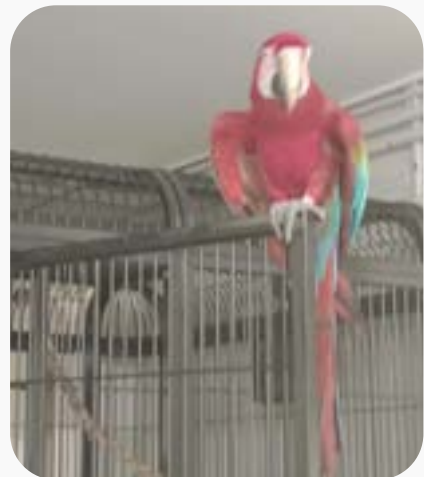


Gardens, tended by Cherwell Staff

A team of down syndrome boys and girls look after all the animals, and they are so proud and passionate of the work they do does bring a tear to your eyes.

I always remember being dropped in the 'Deep End' being asked to do a small inspirational talk on all the work we do at Reiki Tradition School of Reiki. This was to almost 40 people. How could I resist, and of course my answer was a BIG astonishing 'YES'. Everyone was quiet blown away hearing the work we do and our Alliance with PossAbilities and our work going forward.

We are still working with PossAbilities with a view of assisting and helping on wellness days and further works with staff, clients and attendees.



Macaw, Cherwell Resident

We will post further information as this work unfolds

COMPETITION TIME

JUST FOR TODAY PUZZLE

Enter
to Win

How good is your Reiki knowledge?

Enter our competition for your chance to WIN!

First one to email us the correct solution BEFORE
Sunday 3rd November 2024 will win a FULL BOX of Nag
Champa incense... that's 12 packs in the box!!



WINNER WILL BE PUBLISHED IN NEXT ISSUE ALONG WITH ANSWERS.... GOOD LUCK FOLKS!!

REIKI WORDSEARCH

b e x o d f t g l a v f t f n
m a t h z p w i e e o o e a w
e a l n n r i u o g i q r n n
r s l a t i p s o h y o o c i
e t t r n n s k n o i h d r u
h e l a u c a q i s a t e p i
l b c h r i e o r p n h p m a
f l i d p p o d s i t s o h z
b h o d s l s n h c m o a i r
o r d n d e e y t e n w l d u
a l j n o s h r g s a c s l d
s e t i o t h w m i r l h l s
p e h y a u s u i e s i i y a
u n b i c c e o e a g l h n n
f t u k c p a g y s b e t c g



balancedhealing
byosen
gokai
hawaii
hospices
hospitals
principles
usui

EMAIL YOUR ENTRY TO
info@reikitradiation.me.uk

CLOSING DATE

Sunday
3rd Nov 2024

Our Assistants

We couldn't do this without you, thank you

Reiki Master



Lynne



Sharon



Janis



Lynnette



Harjinder



Steven



Alyson



Alisa

Reiki Practitioners



Piotr



Amy

DID YOU KNOW?

IF YOU ASSIST ON ANY OF

OUR COURSES YOU GAIN

1 CPD POINT FOR EACH HOUR

FOR EXAMPLE

IF YOU ASSIST FOR
1 FULL DAY OF 8 HOURS
YOU GAIN



IF YOU'RE A

REIKI 1 TO 3 STUDENT

*We'd love you to join us
to register your interest
please give us a call
Martin - 07966 149 365*

CONTINUING
PROFESSIONAL
EDUCATION

THANK YOU

for joining us on issue two of

JUST FOR TODAY

Our Quarterly News from Reiki Tradition Healing & Training Centre
REIKI NEWS... more than just a Newsletter

靈氣 伝統

we'd love to see you again

NEXT ISSUE: Autumn 2024

Issue No.3 what's coming up....

Features include



Prince of Peace



Giving Back



Trusted Reviews



Reiju



Balanced Healing

Plus much, much more...



SCAN ME

SIGN-UP here

ALL LINKS TAKE YOU DIRECT TO OUR WEBSITE

www.reikitradeion.me.uk



CLICK ME

This newsletter is for you, and we'd love your feedback....
like to see something published?.... then please give us a call