

靈氣

# JUST FOR TODAY

Our Monthly News from Reiki Tradition School of Reiki  
Healing & Training Centre

REIKI NEWS... more than just a Newsletter

靈氣 伝統

# Welcome

*We're so happy you're here!*

Thank you to all our subscribers, old and new!

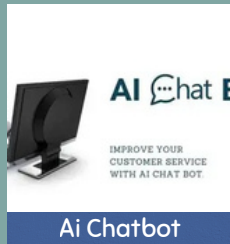
Here, you'll get quarterly updates, course info,  
announcements and all things Reiki

We're thrilled to have you!

## IN THIS ISSUE



Astemo



Ai Chatbot



2027 Courses



Reiki 3<sup>rd</sup> Degree



Mrs Hawayo Takata

Plus all things Reiki .....

ACCREDITED, CERTIFIED & VERIFIED BY



# Welcome to *JUST FOR TODAY*

Issue No. 10

靈氣

## Contents

Content.....	2
Forward.....	3
Your Teacher.....	4
Astemo Hitachi.....	5
Chatbot.....	6
Courses 2027.....	9
Reiki 3rd Degree.....	11
Mrs Hawayo Takata.....	15
Reiju Kai Reiki Share.....	18
Room Hire.....	19
Book to Read.....	20
Competition Time.....	21
Congratulations.....	22
About You.....	23
Back Cover.....	24

### *Who we are and what we do.....*

We are a **Healing and Training Centre and School of Reiki** based in the picturesque village of Springhead, Oldham in Lancashire....

*where you become a Happier Healthier You*

You can see why students attend our courses from all over the UK

Rest assured, when selecting **Reiki Tradition School of Reiki** as your Reiki Training Provider, you will be receiving the very best training within the Reiki Industry.



**Martin Robert Thirlwell**  
10th Generation Reiki Master

Martin holds **AET Level 3 Award in Teaching and Education**; the highest standard.

Our teaching is **fully inclusive**, meaning we can also teach **disabled children** and **adults with special needs**.

Martin also holds an **Accredited Distinction in Regression and Psychoanalysis**.

# Reiki Tradition

靈氣 伝統 School of Reiki 靈氣 伝統

ACCREDITED, CERTIFIED & VERIFIED BY

FHT  
CNHC  
Reiki Council

### CONTACT US

176 Oldham Road  
Springhead  
Saddleworth  
Oldham  
OL4 5SJ

Email: [admin@reikitradiation.org.uk](mailto:admin@reikitradiation.org.uk)

Office: 0161 627 5413

Mobile: 07966 149 365

Web: [www.reikitradiation.org.uk](http://www.reikitradiation.org.uk)



I'LL TAKE  
YOU DIRECT TO  
THE WEBSITE

### FOLLOW US

You can find out more about Reiki Tradition and see what we've been up to via our social media pages:



[www.facebook.com/reikitradiation](http://www.facebook.com/reikitradiation)



[www.instagram.com/reikitradiation/](http://www.instagram.com/reikitradiation/)



[www.youtube.com/reikitradiationschoolofreiki](http://www.youtube.com/reikitradiationschoolofreiki)

## Foreword.....

MARTIN R THIRLWELL  
MFHT, MCHP, CNHC REGISTERED  
OWNER REIKI TRADITION



靈氣 傳統

Hi Everyone,

### Spiritual Empowerment for Your Path

As you move through your Reiki journey, may you feel the quiet strength of the Universe rising gently within you, reminding you that every step you take is guided by a wisdom far older and deeper than the mind can grasp. Each moment of stillness, each breath of awareness, and each act of compassion opens a doorway to greater clarity, inviting you to reconnect with the essence of who you truly are. You are not walking this path alone—your lineage, your teachers, your guides, and the light within your own heart walk beside you, supporting your growth in ways both seen and unseen.

Trust the subtle nudges of intuition, for they are the language of Spirit, gently steering you toward alignment and purpose. Honour the growth unfolding within you, even when it feels delicate, slow, or hidden beneath the surface. Transformation often begins quietly, like a seed awakening in the dark, long before its beauty becomes visible to the world. With each step you take, you expand your capacity to heal, to serve, and to shine, radiating a calm, steady presence that touches others more deeply than you may ever realise.

You are a vessel of clarity, purpose, and peace. Your energy carries the imprint of your dedication, your compassion, and your willingness to evolve. As you continue to open your heart and strengthen your connection to Reiki, may you feel the profound truth that you are part of something sacred, timeless, and beautifully interconnected. The world is brighter because of the light you bring into it, and your journey—exactly as it is—is a gift to all who cross your path.

Martin x

## Welcome.....

MR MARTIN R THIRLWELL  
EDITOR



When you teach from the *Heart*  
You reach the *Soul* of the Student

# YOUR TEACHER

## Teacher Insights

### Martin Robert Thirlwell

10th Generation Reiki Master

#### EXPERIENCE

- 40 years' experience in Reiki; solely in the traditional Usui Shiki Ryoho System of Natural Healing, (no other therapies taught)
- Speaker/Lecturer in Reiki supporting the Federation of Holistic Therapist (FHT)
- Co-ordinator for the FHT Manchester North Local Support Group
- Works with AGE UK Manchester Dementia clients providing Reiki
- Works supporting Oldham NHS Amputee Day Care Unit with Reiki
- Works supporting Reiki at all local Hospitals and Hospices in Oldham and surrounding areas, and training all current Reiki Practitioners to an Accredited Level to the Core Curriculum
- Works with Jane Tomlinson-Wightman, Safe Active Birth in Kendal. Teaching midwives to an Accredited Level to the Core Curriculum to allow them to work with Reiki in an NHS environment
- Works with PossAbilities in Heywood. PossAbilities are a social enterprise organisation that supports vulnerable people so that they can live the life they choose



#### QUALIFICATIONS

- FHT Accredited Reiki Level 1, 2 and 3 (Master Teacher)
- 10th Generation Reiki Master (Usui Shiki Ryoho System of Natural Healing)
- FHT Full Professional Member
- CNHC Accredited Registered
- CHP Full Member
- AET Level 3 in Teaching and Education (the highest standard); this also allows teaching disabled children and adults with special needs
- Accredited Distinction in Regression and Psychoanalysis

# Astemo Hitachi

**HEAR** it here **FIRST**

**Wellness days 29<sup>th</sup> April & 6<sup>th</sup> June 2026**

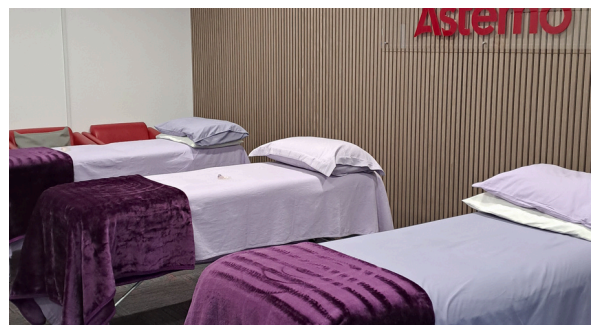


Corporate Reiki Wellbeing – Astemo Hitachi, Bolton (February 2026)

In February 2026, Reiki Tradition School of Reiki was invited to return to Astemo Hitachi in Bolton to deliver two full days of professional Reiki support within the workplace. Over the course of the programme, we provided Reiki treatments to employees, staff members, and management,

offering a calm, restorative space to promote wellbeing, reduce stress, and support overall balance.

Both days operated as full onsite wellbeing sessions, running from 10:00am to 6:00pm, ensuring that individuals across all departments had the opportunity to receive treatment throughout the working day. At Reiki Tradition, it is an important part of our ethos to invite students to accompany us whenever we deliver external or commercial Reiki programmes.



This not only enriches their learning experience but also helps them build confidence, professionalism, and ease when working within corporate environments.

For this visit to Astemo Hitachi, I was delighted to be joined by Kerry and Hardinder, both of whom demonstrated exceptional skill, professionalism, and compassion throughout the event. Their contribution was outstanding. Across each full day, we collectively provided 30 individual Reiki treatments, supporting staff from all departments. Over the two-day programme, this totalled 60 treatments, offering meaningful wellbeing support to the Astemo Hitachi team.



**Thank-You  
Harjinder & Kerry**

*New just released 25<sup>th</sup> March 2026*



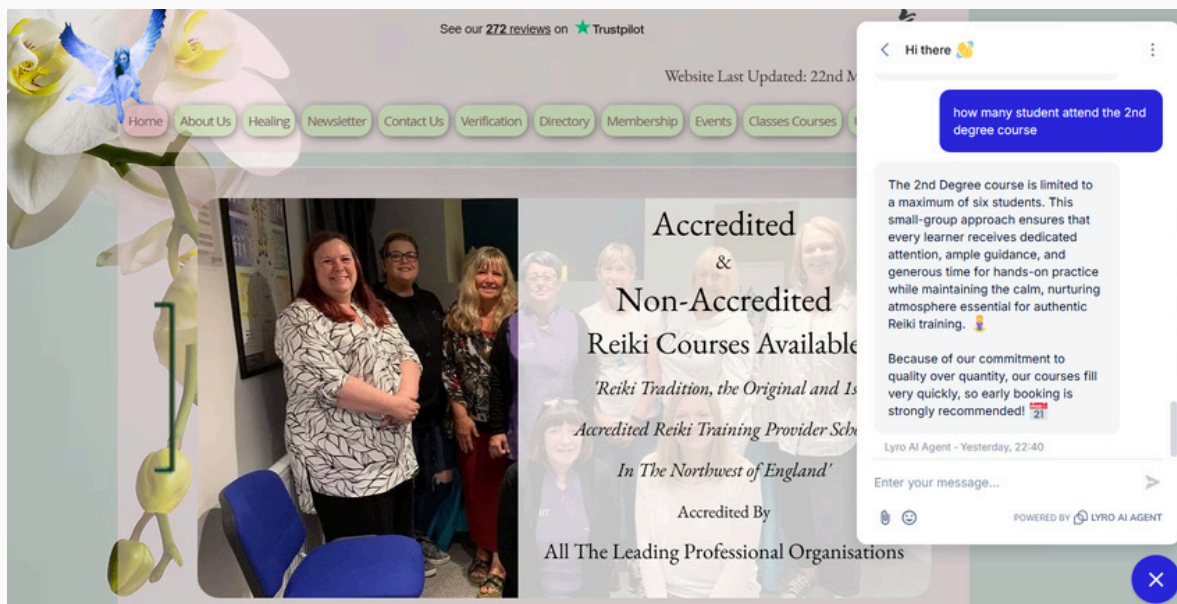
## **Reiki Tradition School of Reiki: Introducing Our New AI Chatbox – A Smarter Way to Explore Our Accredited School**

### **Our New AI Chatbox Is Here to Help**

Reiki Tradition now has a brand-new AI Chatbox available across our whole website, making it easier than ever to find the information you need. Whether you're checking what each Reiki level involves, looking into our accredited training, or exploring Animal Reiki, the Chatbox can guide you straight to the right place without any searching or scrolling.

It understands the full structure of our website and can answer questions about course content, safeguarding and DBS checks, insurance options, lineage, practitioner requirements, and how our accredited pathways work. It's available 24/7, so you can get quick, clear answers whenever it suits you.

The Chatbox is designed to support everyone—new visitors who want to understand what makes Reiki Tradition different, current students who need reminders or guidance, and organisations looking for accredited training information. It doesn't replace our personal teaching or support; it simply makes the website easier to navigate and helps you find what you're looking for with confidence.



# NEW FOR 2026

NEW

## chatbot



### AI Chat Bot

IMPROVE YOUR  
CUSTOMER SERVICE  
WITH AI CHAT BOT.



Our Reiki Tradition Chatbot – Introduced February 2026, Now Supporting Students with 95% Enquiry Success

At Reiki Tradition School of Reiki, we are always looking for meaningful ways to enhance the experience of everyone who connects with us. In February 2026, we introduced our new website chatbot – a simple yet transformative addition designed to make communication smoother, faster, and more personal. Since its launch, the chatbot has become an integral part of how we support students, prospective learners, and members of our wider Reiki community. Whether someone is exploring Reiki for the first time or progressing through our accredited qualification pathway, the chatbot offers a calm, friendly, and accessible space to ask questions and receive guidance.

We are proud to share that since its introduction, the chatbot has achieved an outstanding 95% success rate in resolving enquiries. This achievement reflects not only the effectiveness of the system but also the dedication and care behind every response. Each enquiry – whether it's about course availability, accreditation requirements, lineage, or booking support – is treated with genuine attention. Our aim has always been to ensure that no one is left waiting or feeling uncertain, and the chatbot allows us to uphold that promise with consistency and warmth.

The introduction of the chatbot has also deepened the sense of community that defines Reiki Tradition. Many students use it to stay connected between training days, to clarify aspects of their learning, or to seek reassurance as they grow in confidence. Prospective students often share that the chatbox helped them feel welcomed and supported even before enrolling. It acts as a gentle bridge between curiosity and commitment, offering a safe and encouraging space for people to explore the path of Reiki at their own pace.



# NEW FOR 2026

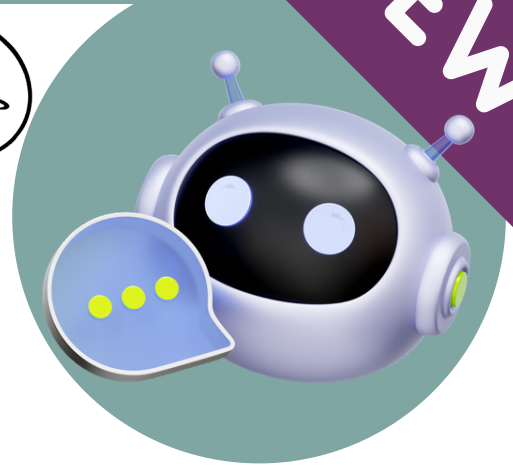
NEW

chatbot



AI Chat Bot

IMPROVE YOUR  
CUSTOMER SERVICE  
WITH AI CHAT BOT.



Beyond its role in communication, the chatbot reinforces our commitment to professionalism, transparency, and high standards. With increasing numbers of people seeking accredited, lineage-honouring Reiki training, it is essential that accurate information is readily available. The chatbox ensures that guidance on CNHC compliance, NOS standards, course structure, and professional development is always within reach. It reflects our wider ethos: to provide a learning environment that is supportive, accessible, and grounded in integrity.

As we continue to grow, the chatbot remains a vital part of how we stay connected with our community. It is more than a digital feature – it is an extension of our values, offering clarity, reassurance, and genuine care at every stage of the journey. With its February 2026 launch marking a significant step forward, and with a 95% enquiry-success rate that continues to rise, we are proud to offer a service that truly supports the needs of our students and reflects the spirit of Reiki Tradition

**Ask Me  
Anything**



# UPCOMING COURSES 2027



HEAR it here **FIRST**

Our 2027 Course dates and calendar has now been released.

## Reiki 1<sup>st</sup> Degree Courses



Five Courses Yearly  
Five dates to choose from  
Start 10am | Finish 5:45pm

### ON THIS COURSE

Accredited and Non-accredited courses available run over 2 consecutive days Saturday and Sunday.



## Reiki 2<sup>nd</sup> Degree Courses



Five Courses Yearly  
Five dates to choose from  
Start 10am | Finish 5:45pm

### ON THIS COURSE

Accredited and Non-accredited courses available run over 2 consecutive days Saturday and Sunday.



# INTERESTED

in any of our upcoming courses

[CLICK HERE](#)



# UPCOMING COURSES 2027



HEAR it here **FIRST**

Our 2027 Course dates and calendar has now been released.

## Reiki 3<sup>rd</sup> Degree Courses

**Reiki Level 3**  
Master / Teacher Course  
3rd Degree

We value the importance of teaching to high standards and sharing the infinite knowledge of the Usui Shiki Ryoho System of Natural Healing

FOR FULL COURSE INFO GO TO  
[www.reikitrade.com](http://www.reikitrade.com)

Certified & Verified by

Two Courses Yearly  
Two dates to choose from  
Start 7pm | Finish 9:15pm

### ON THIS COURSE

This is a Non-accredited courses available run over 2 separate dates, over 6 evenings.



## Accredited Qualification Degree

**Accredited Reiki Qualification Course**

We value the importance of teaching to high standards and sharing the infinite knowledge of the Usui Shiki Ryoho System of Natural Healing

FOR FULL COURSE INFO GO TO  
[www.reikitrade.com](http://www.reikitrade.com)

Accredited, Certified & Verified by

Five Courses Yearly  
Five dates to choose from  
Start 10am | Finish 5:45pm

### ON THIS COURSE

This is our Accredited Qualification course available run over 2 consecutive days Saturday and Sunday. This course conforms to the Core Curriculum and National Occupational Standards. This course incorporates both 1<sup>st</sup> and 2<sup>nd</sup> degree courses



# INTERESTED

in any of our upcoming courses

[CLICK HERE](#)

# INSIGHT REIKI 3<sup>rd</sup> DEGREE



HEAR it here **FIRST**

Lets take a look at our Reiki 3<sup>rd</sup> Degree Course

## Reiki 3<sup>rd</sup> Degree Courses



Two Courses Yearly  
Two dates to choose from  
Start 7pm | Finish 9:15pm

### ON THIS COURSE

This is a Non-accredited courses available run over 2 separate dates, over 6 evenings.



Reiki Tradition School of Reiki – Reiki 3rd Degree

At Reiki Tradition School of Reiki, our Reiki 3rd Degree course marks a profound stage in a student’s personal and spiritual development. Rooted in our authentic Eastern lineage and delivered with the structure, care, and professionalism that define our school, this level invites students to deepen their connection to Reiki energy and step into a more advanced, intuitive way of working. Students explore the Master symbol, refined energetic practices, and the increased responsibility that accompanies this stage of training. Every element is taught with clarity, integrity, and respect for the traditional system, ensuring students feel grounded, supported, and confident throughout their progression.



## INTERESTED

in any of our upcoming courses

[CLICK HERE](#)



# INSIGHT REIKI 3<sup>rd</sup> DEGREE

Click Here

HEAR it here **FIRST**

Lets take a look at our Reiki 3<sup>rd</sup> Degree Course

## Reiki 3<sup>rd</sup> Degree Courses



Two Courses Yearly  
Two dates to choose from  
Start 7pm | Finish 9:15pm

### ON THIS COURSE

This is a Non-accredited courses available run over 2 separate dates, over 6 evenings.



This course is ideal for those who have completed Reiki 1st and 2nd Degree and feel called to elevate their practice, whether for personal growth or to enhance their professional pathway. As a school committed to the Core Curriculum (CC) and National Occupational Standards (NOS), we uphold the highest standards of teaching, safeguarding, and student support. To ensure accessibility for all who feel drawn to this level, we also offer a 0% Student Payment Plan, making it easier for learners to invest in their development without financial pressure. Students leave this course with a strengthened connection to their guides, a refined sensitivity to energy, and the advanced skills required to work confidently at Master Practitioner level – a true reflection of the excellence and ethos of Reiki Tradition School of Reiki.



**INTERESTED**

in any of our upcoming courses

**CLICK HERE**



# Reiki 3<sup>rd</sup> Degree

## Master Teacher Course



Please note Certain Criteria has to be allowed for students booking Courses. A minimum time period of 12 months from completing Reiki 2nd Degree to starting Reiki 3rd Degree has to elapse.

- 4 Attunements (Reiju) to let the Reiki flow and clean the Energy Pipe
- The passing of an additional 4th Symbol (Reiki Master)
- The passing of a 5th additional attunement Symbol
- How to prepare and teach the Reiki degrees
- How to pass Attunements
- Gain CPD Points by attending this course

This course complies with the following Syllabus Standards

- Core Curriculum (CC)
- Regulated Qualifications Framework (RQF)
- Ofqual Level Descriptor (8)
- National Occupational Standards (NOS)
- Complementary Natural Healthcare Council (CNHC)
- Complementary Health Professionals (CHP)
- Reiki Council (RC)
- Code of Conduct set out by the FHT.

Prerequisites:

- Reiki 1st & 2nd Degree (Lineage to Usui Mikao Sensei 1st Generation).
- Full understanding, and the ability to draw Fluently the Reiki 2nd degree symbols.
- Full understanding and the ability to recite the Reiki Principles (Gokai).
- Full understanding and the ability to recite the History of Reiki.

**This course teaches all the Hidden Elements.**

**FURTHER INFORMATION  
CONTACT MARTIN**



07966 149 365



admin@reikitrade.org.uk



# Reiki 3<sup>rd</sup> Degree

## Master Teacher Course



The Master Degree is taught either on a 1:1 basis or a small class group size of no more than 4 students. In this degree you receive another four Attunements. You are now given two more symbols; a Master Symbol and an Attunement Symbol. Some schools of Reiki split this degree into Reiki Advanced Degree and Reiki Teacher Degree, (ie. a 3rd and 4th Degree). However, we cover all aspects of the Master Degree in one intensive course.

Our 3rd Degree Master/Teacher Course is a combined course, its ideal for those who want to work within a higher 3rd degree level, and for practitioners who would like to teach. This initiation opens the doors to our hidden self and takes us up into the next stage of our evolution. It is for those students who wish to become whole, by owning and becoming responsible for all that they are. It is essential to wait a minimum of twelve months after the 2nd Degree before embarking upon the Master Degree. By this stage you should be fully conversant with the chakra system and spiritual issues. You must have also shown a commitment to the regular practice of Reiki and feel committed to passing your knowledge and experience onto others. The Master Degree is for those individuals who wish to teach Reiki. Becoming a Reiki Master requires commitment and dedication. Taking on Reiki Master ship has to be realised is a significant commitment. You will be passing on the 'Usui Reiki Tradition' and maintaining a commitment to the students for teaching and guiding them through their Reiki training. This commitment and guidance must continue long after they have taken their training with you. You must think hard before you embark upon this degree and make sure that you have the dedication required. It is important to understand that we are all continuously learning when we work with the energy of Reiki. We are all on a wonderful learning curve.

Upon completion of this Course on the Saturday evening Students will be presented with the Course Presentation Items.

We ask Students to return back to the Therapy Rooms after a Duration of 8 weeks after completion on the Saturday Evening. This is to attend a Special Presentation. At this presentation evening, students are presented with special Reiki Historic Gifts, Lineage items. This evening is a surprise evening, where students are presented with Special Memorabilia items. This evening is presented by Martin R Thirlwell Reiki Master, in recognition of new Master Students now joining the Usui Shiki Ryoho Lineage.

### FURTHER INFORMATION CONTACT MARTIN



07966 149 365



[admin@reikitradiation.org.uk](mailto:admin@reikitradiation.org.uk)

# Mrs Hawayo Takata

Brought to you by Reiki Tradition, School of Reiki

Hawayo Takata's Hawaiian home—located at 2070 Kilauea Avenue in the Waiakea Homesteads area of Hilo, on the Big Island—became the centre of her healing work after she returned from Japan in the 1930s. It was here that she offered Reiki treatments, massage, cabinet baths, and later expanded her practice under the name Hawaii Health Studio.



The house itself is a traditional wooden Hawaiian structure, situated in the lush, rainy eastern side of the island near what is now Volcanoes National Park. This home served not only as her residence but also as the place where she lived and taught Reiki, creating a warm, community-based environment for students and clients.



# Mrs Hawayo Takata

Brought to you by Reiki Tradition, School of Reiki



Today, the house holds a special place in Reiki history because it has been preserved with great respect. In 1986, it was purchased by Dr. Robert Klein, a chiropractor who continues to work from the building. Klein is familiar with Reiki and considers it an honour to practise in a space with such deep lineage significance.

Today, the house holds a special place in Reiki history because it has been preserved with great respect. In 1986, it was purchased by Dr. Robert Klein, a chiropractor who continues to work from the building. Klein is familiar with Reiki and considers it an honour to practise in a space with such deep lineage significance.



# Mrs Hawayo Takata

Brought to you by Reiki Tradition, School of Reiki

Importantly, he has kept the house unchanged, maintaining original memorabilia belonging to Mrs Takata—including her early advertisements and signage—so that the energy and history of the place remain intact. Visitors have described the atmosphere as peaceful, welcoming, and strongly connected to Takata’s legacy, making it a living landmark for Reiki practitioners worldwide.



Reiki Massage  
Swedish Massage  
H. Takata  
高田靈氣治療法  
(Takata Reiki treatment method)

# Reiju-Kai & Top up Attuments

Reiju-Kai REIKI SHARE Meeting Sunday May 17th

What a wonderful afternoon – 11 attendees, with apologies to the four who were unable to join us. Thank you to each and every one of you for attending. Everyone did brilliantly, and it was truly lovely to see people I haven't personally seen for such a long time.

Congratulations to our raffle winners: Angela McCarthy and Val McCabe well done to you both.

When is it?

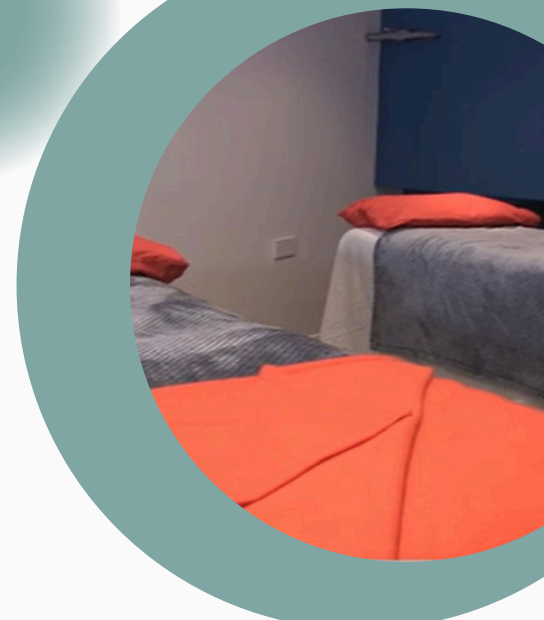
**NEXT AVAILABILITY**

Start 1pm | Finish 4pm

Sunday 17th May

We look forward to meeting you  
Booking is essential via our  
events page. Use the link below.

£5



# ROOM HIRE

Here at The Healing & Training Centre in our beautiful Saddleworth

**DID YOU KNOW?**



## YOU can hire our rooms



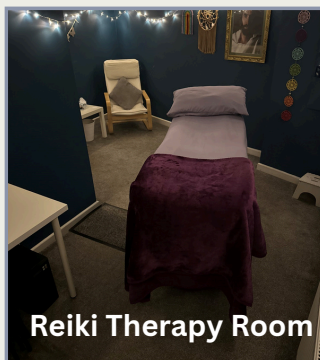
Counselling Room 1



Counselling Room 2



Training Room



Reiki Therapy Room

### Rooms available

365 Days a year

24 Hours a day

2 Counselling Rooms

1 Reiki Therapy Room

1 Training Room (max 12 people)

FOR more info call Martin

**07966 149 365**

## NEXT ISSUE: March 2026

SIGN-UP here

CLICK ME

[www.reikitradiation.me.uk](http://www.reikitradiation.me.uk)



SCAN ME

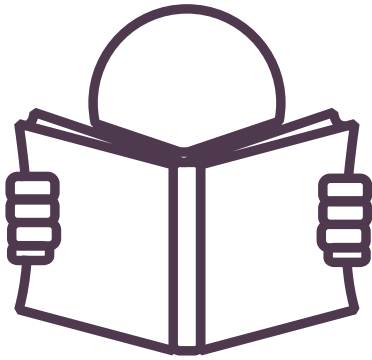


ALL LINKS TAKE YOU DIRECT TO OUR WEBSITE

# OUR CURRENT READS

The more that you read, the more things you will know  
The more that you learn, the more places you will go

REGULAR

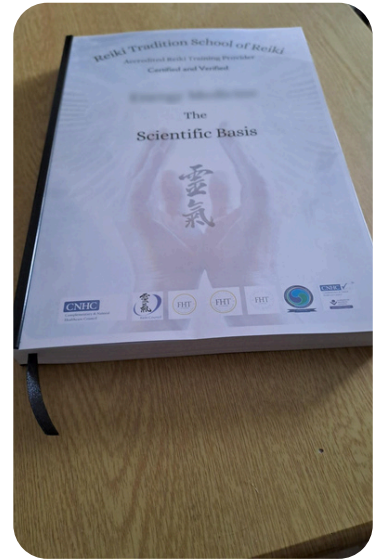


Here we bring you the book we are currently reading which we have found inspiring and a useful addition to our own library and continued learning. If you would like to recommend a book to share with readers for the same reasons, please drop us a line with the title and author and what you've found useful within the book



## Reiki and the Scientific Basis

**Martin Robert Thirlwell**  
10th Generation Reiki Master  
Reiki Tradition Owner

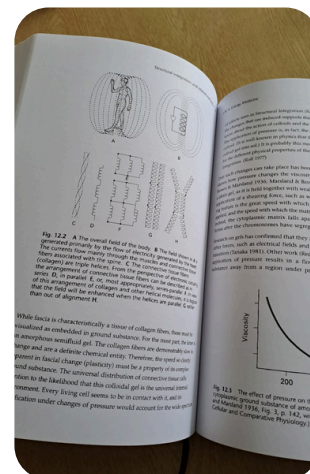
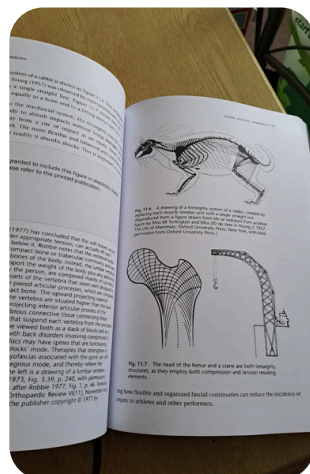
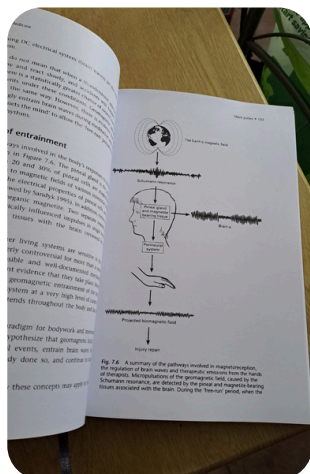


This book is available exclusively through Reiki Tradition School of Reiki and forms an important part of our educational and professional development resources. With over 300 pages, it provides a comprehensive exploration of the scientific research, clinical observations, and bio-energetic studies that underpin modern understanding of Reiki and vibrational healing.

The material draws extensively on the pioneering work of Dr. Robert Becker and Dr. John Zimmerman, whose research into the body's electromagnetic fields, bio-communication, and energy coherence has shaped much of what we teach today. Their studies offer measurable, evidence-based insights into how Reiki influences the human energy system, including changes in brainwave patterns, biomagnetic fields, and physiological responses.

This book also examines the science behind the Schumann Resonance, the Earth's natural frequency, and its relationship to human health, balance, and energetic stability. These principles have been central to our teaching since 2012, and the book provides a clear, accessible explanation of how resonance, vibration, and energetic alignment contribute to wellbeing.

For students, practitioners, and anyone wishing to deepen their understanding of Reiki from a scientific perspective, this text offers a valuable and authoritative resource that supports both personal learning and professional practice.



# COMPETITION TIME

## JUST FOR TODAY PUZZLE

Enter to Win

Enter our competition for your chance to WIN!

The fastest time wins. get it back to us before Sunday 14<sup>th</sup> June 2026, a chance to win a FULL BOX of Nag Champa incense... that's 12 packs in the box worth £15!!



## REIKI-RELATED JIGSAW



TO ACCESS

[www.reikitradiation.me.uk/monthly-puzzle](http://www.reikitradiation.me.uk/monthly-puzzle)

or CLICK the picture to go straight to the puzzle....Good Luck.

Once you've completed the jigsaw.....

SCREENSHOT it and attach the photo in an email to;

EMAIL YOUR ENTRY TO  
[admin@reikitradiation.org.uk](mailto:admin@reikitradiation.org.uk)

WINNER WILL BE PUBLISHED IN NEXT ISSUE.... GOOD LUCK FOLKS!!

CLOSING DATE

Sunday  
14/06/2026

Please note, Terms and Conditions apply  
Entries only open to those subscribed to our Newsletter

# Congratulations!

Each month, we are truly delighted to celebrate the dedication and achievements of all students who have attended our courses. Your commitment to learning, your openness to growth, and the care you bring to your Reiki practice enrich not only your own journey but the wider Reiki Tradition community. Every step you take—whether beginning your path or deepening your understanding—adds to the collective energy that makes our school such a supportive and inspiring place to learn. Congratulations to each of you for showing up, progressing with intention, and honouring the lineage through your continued development.



**A HUGE CONGRATULATIONS TO  
Dawn, Wendy, Charlotte, Paula, and Jan**

May 9<sup>th</sup> 10<sup>th</sup> 2026 completing the Reiki 2<sup>nd</sup> Degree course in the Lineage of the Usui Shiki Ryoho System. A joint course of both Accredited and Non-Accredited Students Attended.



**A MASSIVE CONGRATULATIONS TO  
Dawn, Wendy, Charlotte, Paula and Jan**

**THANK-YOU TO ASSISTANTS  
Zane, Julie, Shital**



WHEN THE STUDENT IS  
READY, THE TEACHER  
WILL APPEAR.

[GAUTAMA BUDDHA]



# Today IS ALL ABOUT You



## It's All About You – Our Reiki Practitioners

Are you a Reiki Practitioner working from home, running a small wellbeing space, or offering Reiki within a professional or statutory setting? We'd love to shine a light on the incredible work you do. Every practitioner has a unique story, a journey that brought them to Reiki, and a passion that keeps them supporting others with compassion and skill.

So why not share a little about yourself with our community. Tell us where you practise, what inspires you, and how Reiki is making a difference in the lives of the people you support. Your experience could uplift, encourage, and inspire fellow students and practitioners across Reiki Tradition School of Reiki.



We'd love to hear from any of our amazing students if you have a personal story you'd like to share in the Newsletter directly on this page

Maybe a special treatment where you experienced something magical or an overpowering treatment you gave or received.

Please email Martin at [admin@reikitradiation.org.uk](mailto:admin@reikitradiation.org.uk)

# THANK YOU

for joining us on issue ten of

# JUST FOR TODAY

Our Monthly News from Reiki Tradition School of Reiki  
REIKI NEWS... more than just a Newsletter

靈氣 伝統

we'd love to see you again

## NEXT ISSUE: July 1st 2026

Issue No.11 what's coming up....

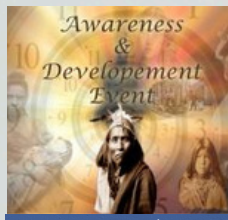
Features include



Chujiro Hayashi



1st Degree Course



Awareness Development



Reiki



CNHC



SCAN ME

## SIGN-UP here

Signing up to our Newsletter means signing up to a membership package



[www.reikitradeition.org.uk](http://www.reikitradeition.org.uk)



CLICK ME

Plus much, much more...

This newsletter is for you, and we'd love your feedback...  
like to see something published?... then please give us a call